

Wood-Compo Screwdriver

PAT.

No. 300 Series
Standard type



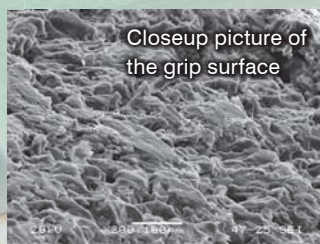
New

No. B-330 Series
Tang-Thru type

**Secure ideal
working
efficiency even
with an oily hand!**
Most Reliable Non-Slip Grip Model

Star-shaped nut for hammering
Tang-Thru type. Make an impact on
the screw by hammering to loosen it.

The rough surface that
is produced by the wood powders
assures beneficial non-slip effect.



Closeup picture of
the grip surface



Wood-Compo Tang-Thru Screwdriver

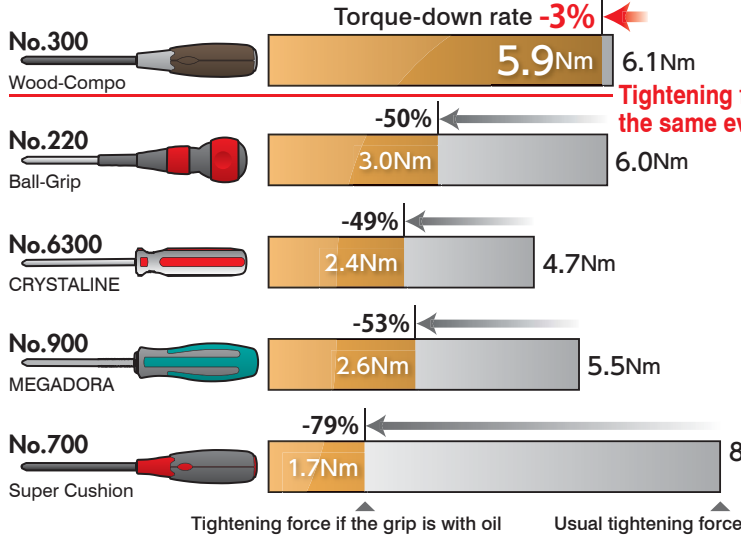
VESSEL
Let us think.

New

The shank is made of fully hardened chrome vanadium steel and finished with black chrome plating.

Such non-slip screwdriver not available before!

Maintenance for cars, motorcycles, and machines, inevitably comes with oil. With such non-slip Wood-Compo Screwdrivers, you can feel the efficient torque transmission when tightening screws. This is because the rough surface which is made by wood powder contained in the grip stops the oil flux.



Tightening force is almost the same even under oily condition!



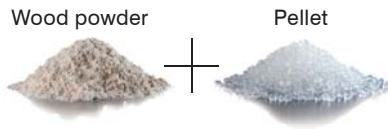
PAT. New

No. B-330 Wood-Compo Tang-Thru Screwdriver

Size	mm		mm	mm		mm	mm	Inner Ctn.	Outer Ctn.
	mm	mm		mm	mm				
⌀5.5 × 75	5.5	0.8	75	5.5	30	183	6	120	
⌀6 × 100	6.0	0.9	100	6.4	32	217	6	120	
⌀6 × 150	6.0	0.9	150	6.4	32	267	6	60	
⌀8 × 150	8.0	1.1	150	8.0	35	277	6	60	
⌀1 × 75	⌀No.1		75	5.5	30	183	6	120	
⌀2 × 100	⌀No.2		100	6.4	32	217	6	120	
⌀2 × 150	⌀No.2		150	6.4	32	267	6	60	
⌀3 × 150	⌀No.3		150	8.0	35	277	6	60	

Wood-Plastic Composite

The grip part is formed by the mold injection of a "wood resin", which consists of 70% wood and 30% plastic, utilizing uniquely developed technologies. The product offers to the users such texture and comfort as the natural wood materials.



More sizes are now available even in the standard series.



PAT. New

No. 320 Wood-Compo Screwdriver (Stubby Type)

Size	mm		mm	mm		mm	Inner Ctn.	Outer Ctn.
	mm	mm		mm	mm			
⌀6 × 15	6.0	0.9	15	6.0	35	68	6	120
⌀2 × 15	⌀No.2		15	6.0	35	68	6	120

● Product specifications, dimensions, and other information are subject to change without notice.



PAT.

No. 300 Wood-Compo Screwdriver

Size	mm		mm	mm		mm	Inner Ctn.	Outer Ctn.
	mm	mm		mm	mm			
⌀5.5 × 75	5.5	0.8	75	5.5	30	182	6	120
⌀6 × 100	6.0	0.9	100	6.4	32	215	6	120
<i>New</i> ⌀6 × 150	6.0	0.9	150	6.4	32	265	6	120
⌀8 × 150	8.0	1.1	150	8.0	35	275	6	120
⌀1 × 75	⌀No.1		75	5.5	30	182	6	120
⌀2 × 100	⌀No.2		100	6.4	32	215	6	120
<i>New</i> ⌀2 × 150	⌀No.2		150	6.4	32	265	6	120
⌀3 × 150	⌀No.3		150	8.0	35	275	6	120

VESSEL Co., Inc.

17-25, Fukae-Kita 2-chome, Higashinari-ku, Osaka 537-0001 JAPAN
Tel : +81(0)6 6976 7778 Fax : +81(0)6 6972 9441

VESSEL EUROPE

6, avenue du 1er Mai, ZAE Les Glaises, 91120 Palaiseau FRANCE
Tel : +33(0)1 69 19 17 42 Fax : +33(0)1 69 19 42 20

E-mail : export@vessel.co.jp URL : http://www.vessel.co.jp/english/

Distributed by

16022500.001